

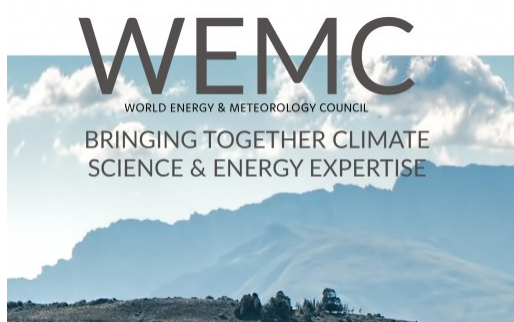


[Become a WEMC member](#)



Welcome to the new look WEMC newsletter

This month we're featuring information on the upcoming C3S_Energy webinar and giving you an exclusive update about the upcoming demonstrator. You'll also find an opinion piece from Michael Ferrari of Atlas Research and a link to our new WEMC Magazine. **Read on to find out more...**



Looking back on the ICEM 2019 in our new WEMC Magazine

The first issue of our new **WEMC Magazine is here!** Featuring all the highlights of our sixth conference in Denmark with a unique look into our innovative projects.

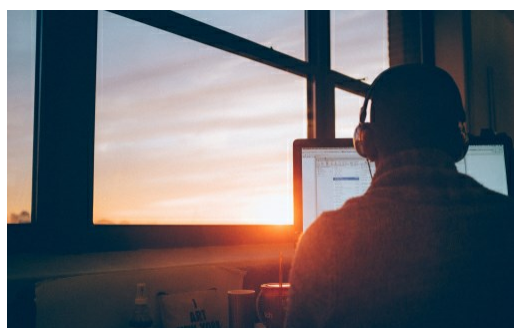
[READ THE MAGAZINE](#)



Should every company be considered an 'energy company'?

In this member blog, **Michael Ferrari**, Managing Partner and Principal of Atlas Research Innovations, shares his opinion on why companies should invest in meaningful energy strategies.

[READ MICHAEL'S BLOG](#)

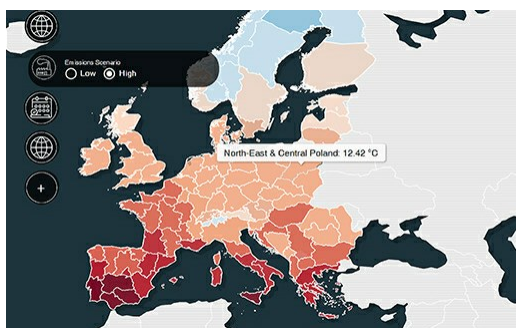


Register for the next C3S_Energy webinar

Discover the potential benefits of using the C3S climate and seasonal information to address the impacts of weather and climate on supply-demand of power and gas.

Join us on Wednesday, 13 November from 10:00-11:00am GMT.

[REGISTER TODAY](#)



A CS3 Demo Case for education

Our Copernicus Climate Change (C3S) education Demo Case is almost complete!

We're currently improving the operation and simplifying the design to make it more user-friendly and accessible for schools.

[FIND OUT MORE](#)



Not a WEMC Member yet?

Contribute to Special Interest Groups and WEMC publications, connect with other energy and meteorology professionals, and access exclusive resources in our Members Area.

Become a WEMC Member for FREE!

[JOIN US TODAY](#)

WEMC

The Enterprise Centre
University Drive
Norwich
United Kingdom



You receive emails from us as you have shown interest in our work. Don't want to see messages from us anymore?

[Unsubscribe here](#)