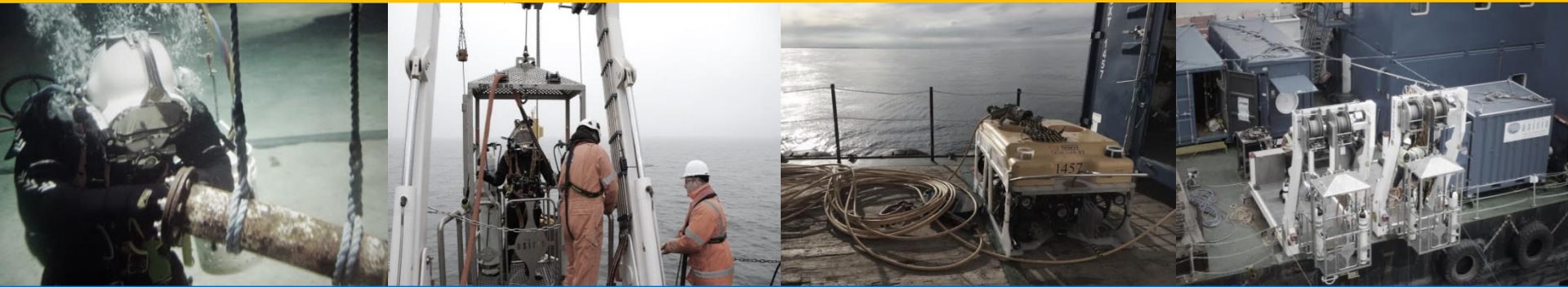




James Fisher and Sons plc

Introduction



www.james-fisher.com



15.30	Coffee & Introductions
15.40	James Fisher & Sons overview
16.00	OWMS Presentation & live demo
16.30	MERMAID Presentation & live demo
17.00	Overview of RWE Galloper OSC Scope
17.20	Drive down to OGN Base [max 4 people]
18.00	Close

Who we are: History



1847



1914



1965



1995



2005



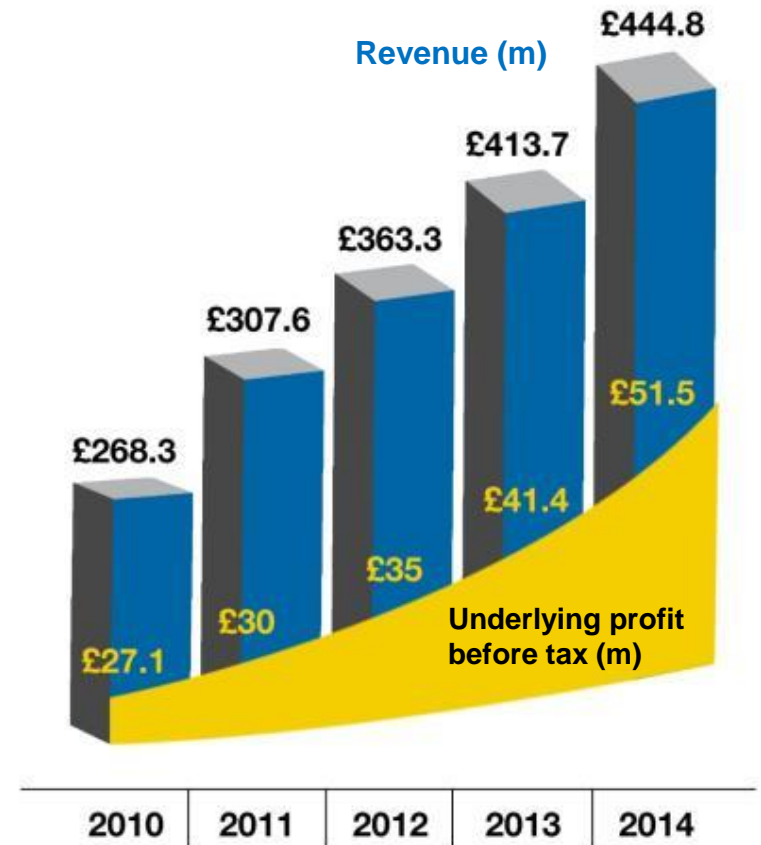
2015





In 2014, James Fisher continued its double-digit growth rates and record breaking profits.

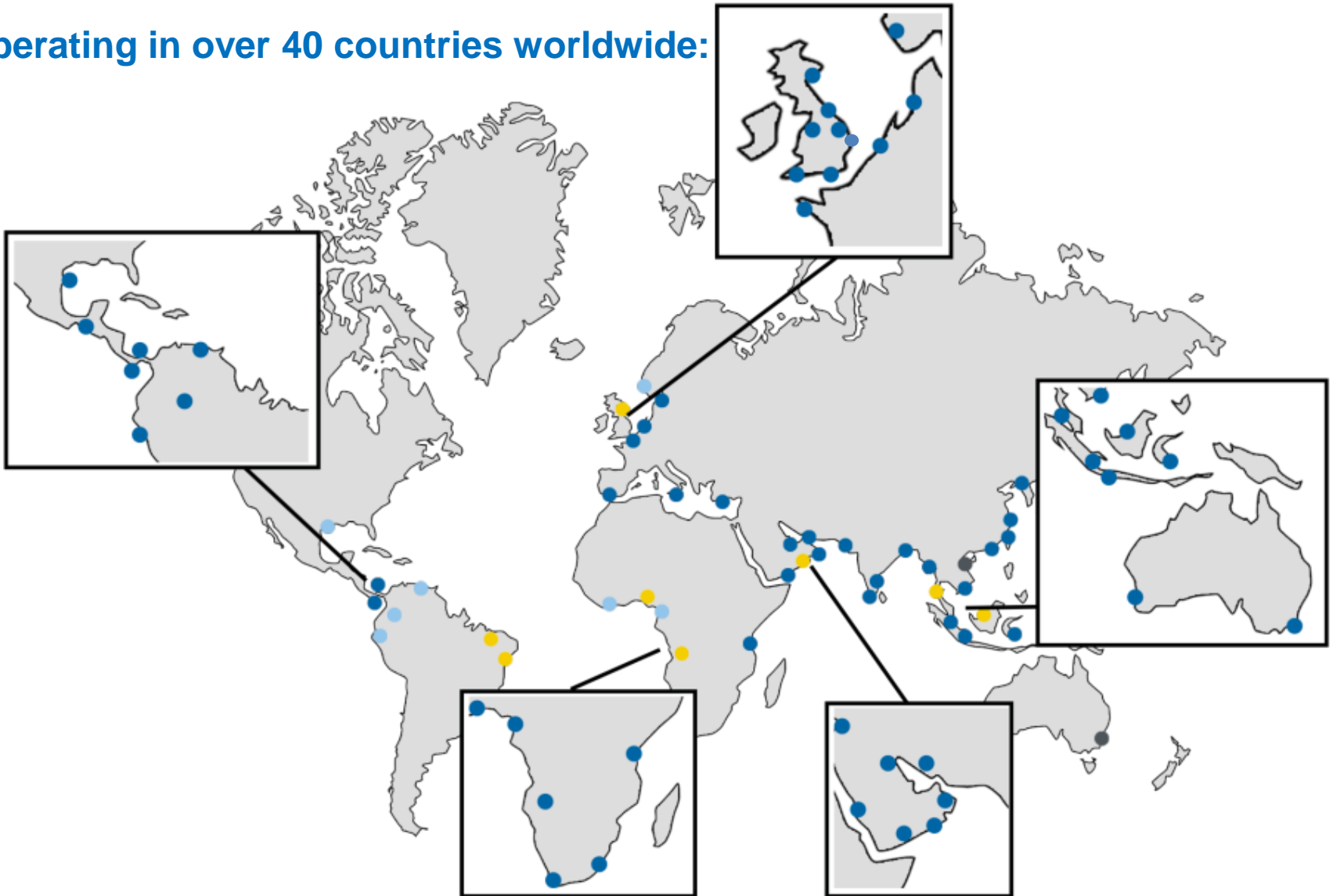
- We are the UK's leading marine service company - expertise applied overseas
- We focus on marine energy markets, including Oil & Gas, Renewables and Nuclear
- We are encouraging increased co-operation and integrated delivery by our Group companies
- We are providing Group wide solutions for larger more complex projects & term contracts as an integrator of services
- We have a proven track record of success



Who we are: **Global locations**



Operating in over 40 countries worldwide:



Who we are: Global client base

Our Delivery Philosophy: **Corporate Social Responsibility**

The Sir John Fisher Foundation is a charitable trust established in 1980 by Sir John Fisher and his wife, Lady Maria Fisher, to continue their philanthropic efforts.

Our focus wherever we work is on local content and with James Fisher you partner with a company which returns 25% of all its dividends back into the community through the Sir John Fisher Foundation.

Concentrating on charitable causes, the Foundation enables its trustees to make charitable grants, in particular to the vulnerable and disadvantaged by supporting maritime, medical and disability, education, music, arts and community charities both locally in Cumbria and North Lancashire and nationally.

The Foundation's capital fund includes its shareholding in James Fisher and Sons plc. The dividends paid by the company enable its trustees to make grants to charitable causes throughout the UK but with special regard to those based in and working for the benefit of people living in and around Barrow-in-Furness, UK and the surrounding area. In 2011 the Foundation was for the first time able to make grants or commitments to charitable causes in excess of £1m. This was largely made possible by the hard work of the employees and management of James Fisher and Sons plc.

Making both a tangible and positive contribution to the community in Barrow-in-Furness, UK and its surrounding area – and with wider benefits arising from many of its medical and other projects being felt both nationally and internationally – the Sir John Fisher Foundation provides a fine example of charitable philanthropy. It is also something that James Fisher and Sons plc is very proud to be associated with.



Who we are: **Commitment to HSEQ**

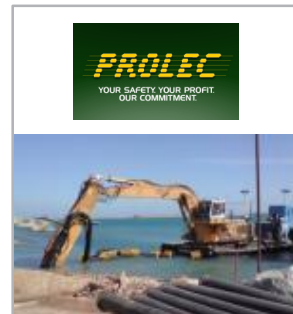


- We employ more than 2,700 personnel worldwide, operating in complex, challenging, sometimes hazardous & highly regulated environments
- We are committed to the health, safety and welfare of our staff and those that work with and alongside us. This commitment is championed by Nick Henry our CEO, who has overall responsibility for health and safety.
- The H&S performance of our group companies is reviewed by the Group Health & Safety Committee (also Chaired by Nick) on a quarterly basis and is always the first item on any board or leadership agenda
- James Fisher Marine Services, is accredited to OHSAS18001 and ISO14001, it operates a Quality Management System accredited to ISO9001:2008 and is Achilles Verified with a score of 96%
- We are extremely proud of our environmental track record – for example as a significant transporter and transferor of both crude oil and clean petroleum products around the globe we have achieved ZERO spills to water

Who we are: **Accreditations and memberships**



Who we are: Our subsidiaries



James Fisher has also recently acquired the Mass Flow Excavation assets of X-Subsea and the WROV and survey assets of S3 [following collapse of REEF]

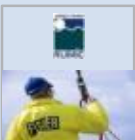
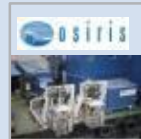
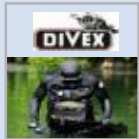
Who we are: **Integrated approach**



Customer



James Fisher
Marine Services



What we do: **Core expertise**



Marine services



Oil and gas



Ship operations



Specialist solutions



Marine services



Oil and gas

Ship operations

Specialist solutions

- Global supplier of marine, deck & port equipment
- Integrator of complex offshore projects including installation operation & decommissioning
- Operator of service and support contracts specialising in the marine environment
- Provider of subsea inspection and repair services utilising own diving & ROV and subsea capability

Commercial diving solutions

Complete range of diver intervention solutions for land based and offshore

Inspection & remediation campaigns



Hyperbaric testing equipment

James Fisher's investment in the National Hyperbaric Centre has combined its subsea services with an industry leading solution to depth test subsea tooling and equipment to deliver **world class training capabilities**



UXO inspection and disposal

Extensive capability in the safe and successful unexploded ordnance disposal (UXO/EOD) service, delivering an integrated approach in both identifying and removing seabed debris, enabling a **reduction in the supply chain**



A large blue and white offshore supply vessel is positioned in the middle of the sea. A long line of red buoys stretches from the vessel towards the foreground. In the foreground, several workers in orange high-visibility gear and white hard hats are visible. One worker in a blue wetsuit and white hard hat is walking towards the left. The sea is a deep blue, and the sky is a pale, overcast grey.

Cable installation, repair & maintenance

Complete solution for export, inter-array, interconnector & power cables including, pre-lay surveys, route clearance, stabilisation & protection for in this instance Thanet Offshore Wind Farm

Mattress and rock bag installation

Delivering an **end-to-end solution** for the engineering and project management of mattress and rock bag installations



Offshore fuels infrastructure servicing & support

Integrated topside & subsea service for import and export marine terminals



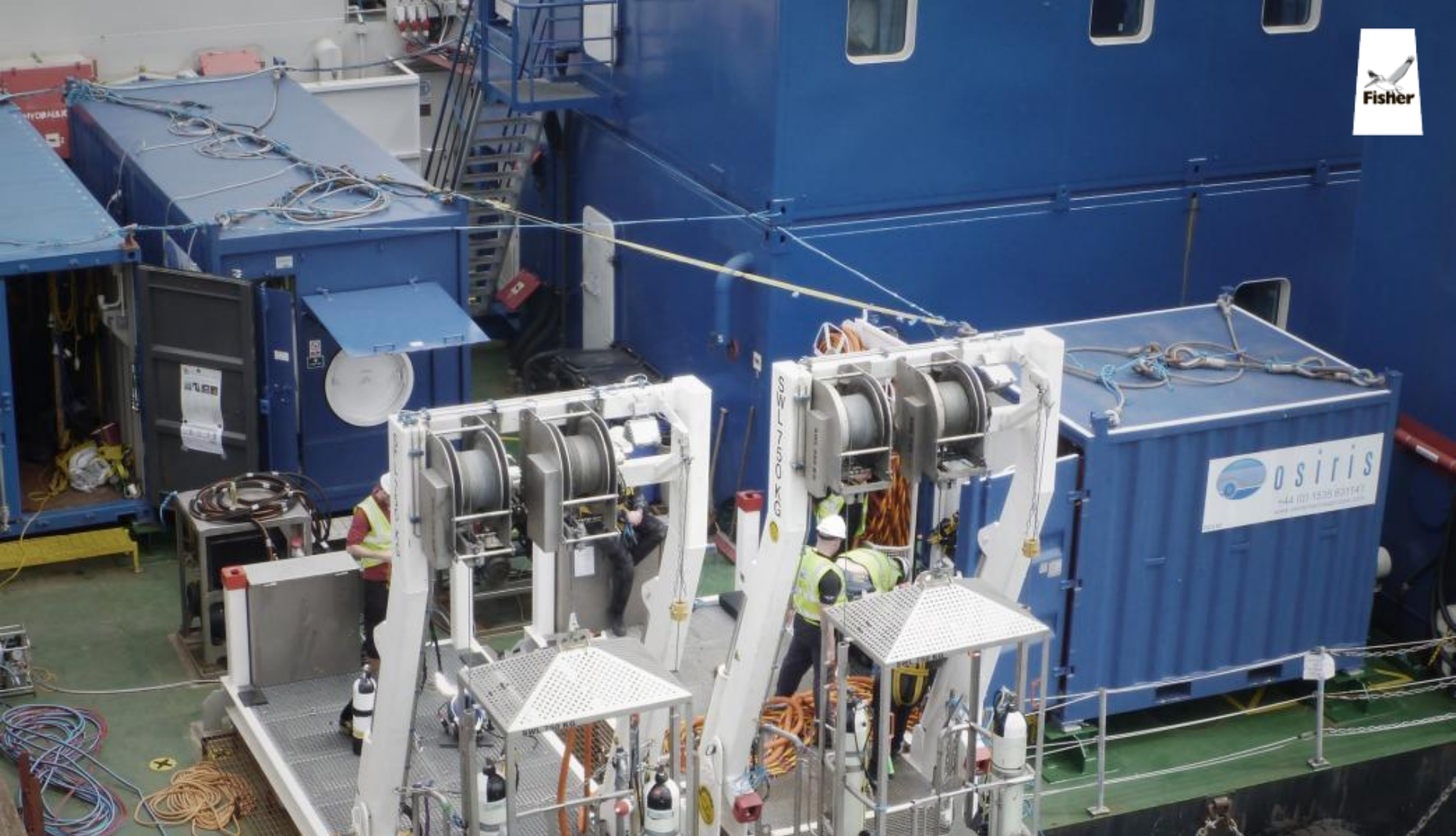
Tidal array installation & maintenance

James Fisher selected by MeyGen to provide the installation services on the **world's first** commercial tidal array in the Pentland Firth



Multi-skilled personnel

Multi-skilled personnel available to support diving, ROV, rigging, tower access, confined space entry, Mass Flow Excavation (MFE) and consultancy projects to **increase operational efficiency** and reduce project costs



Air / nitrox dive equipment

Design, manufacture, supply & service deployment & recovery, control systems, decompression chambers, and diver equipment



Integrated Project Solutions - Moyle Interconnector

James Fisher group company Osiris delivered an integrated subsea solution to install two HVDC and fibre optic cables, which included survey, Diving, ROV, Cable repair capability and a Mass Flow Excavation (MFE) tool.



Remotely operated vehicle technologies

Supply and operate small to medium sized ROVs including support services & skilled personnel



Work Class ROV's

Supply and operate WROVs including support services & skilled personnel



Subsea excavation

Specialist provider of subsea mass flow excavation equipment and skilled operators for material removal around critical structures (cables, piles, pipelines)



Integrated offshore marine solutions

We Engineer, plan, manage & deliver complete marine installation, decommissioning and IRM projects



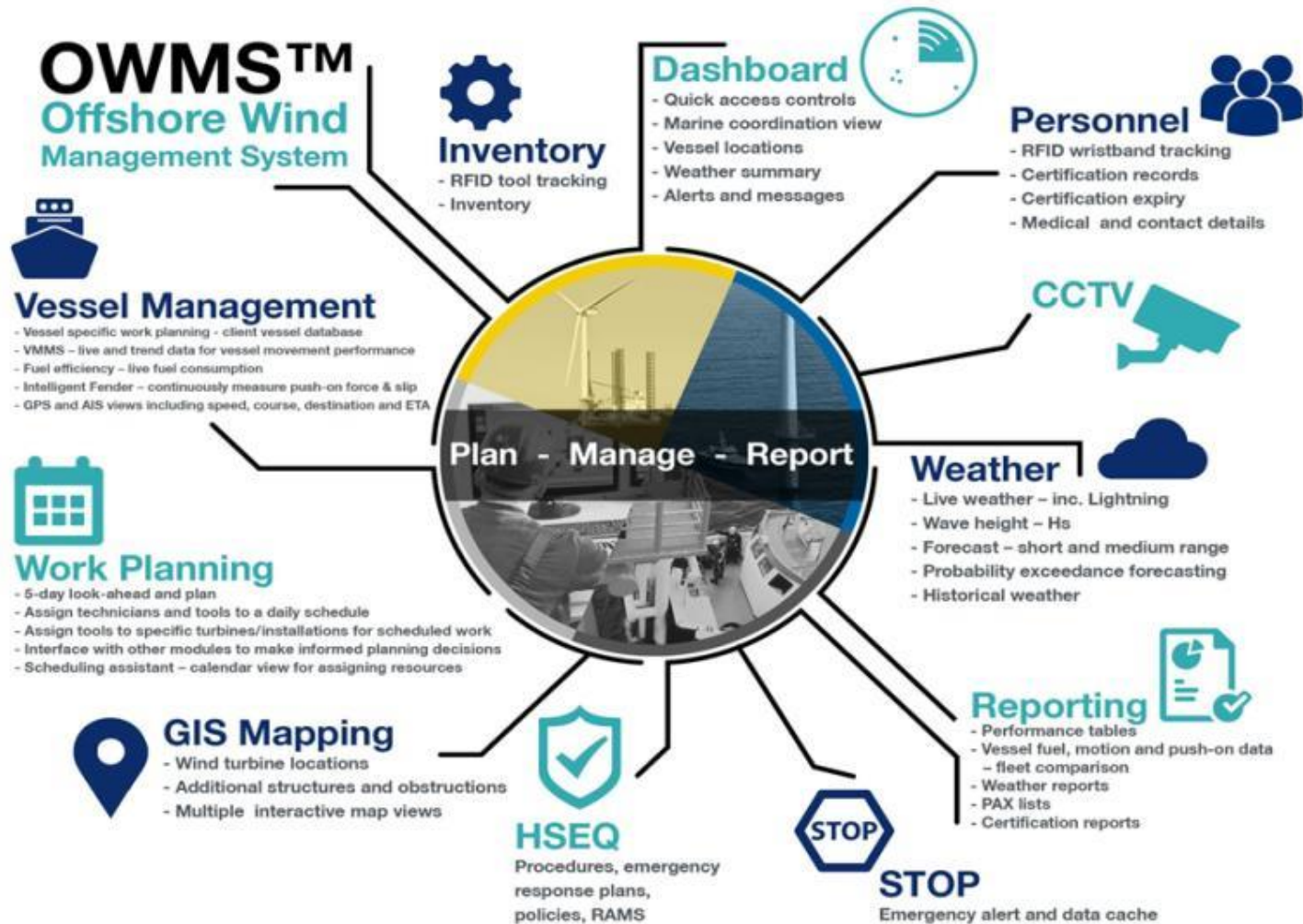
Supplier of CTV's

James Fisher has formal arrangements in place with a number of CTV suppliers to offer a flexible managed vessel service on an ad-hoc, short or long term basis



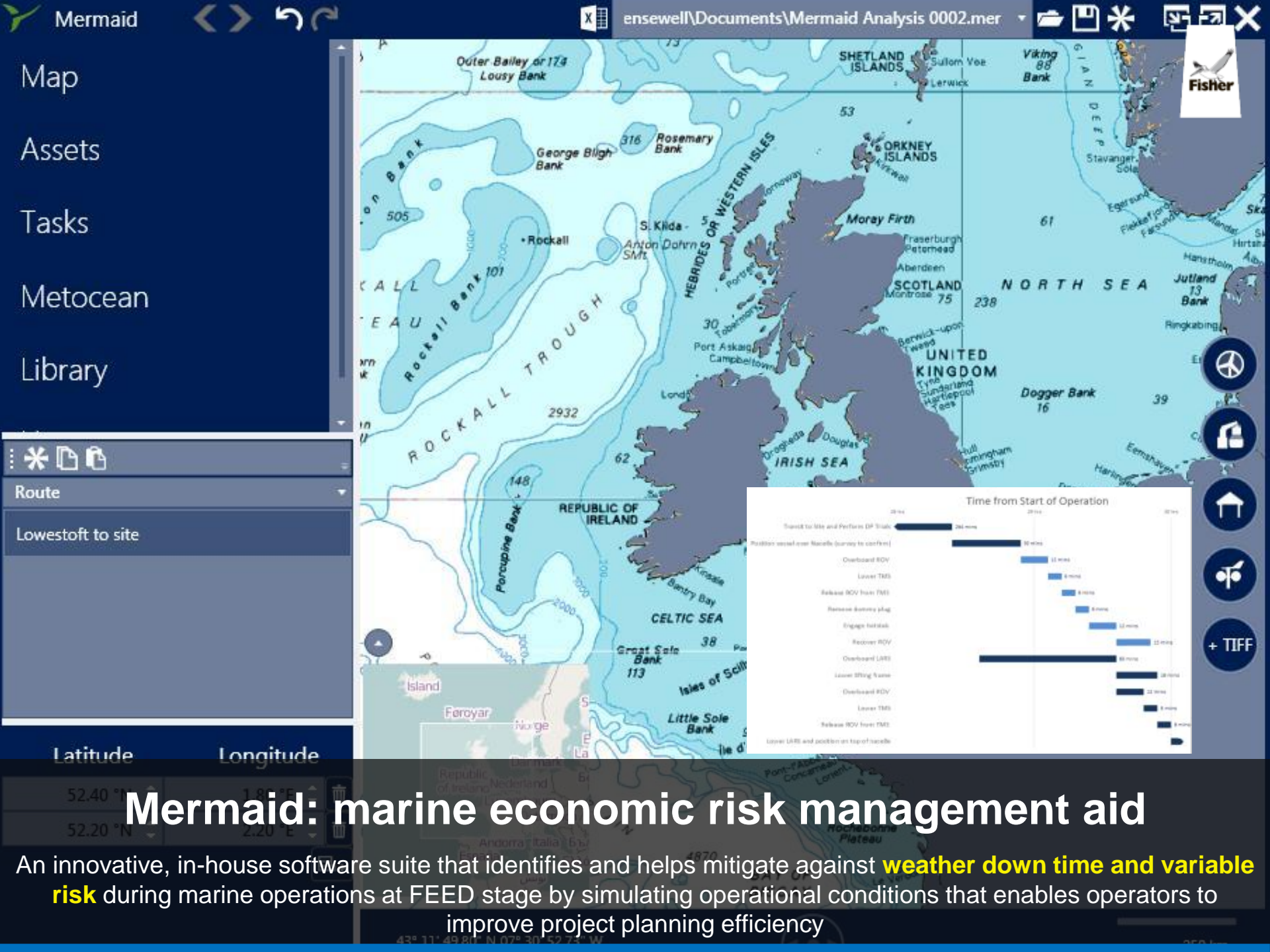
Fendering solutions

World's largest supplier & maintainer of Yokohama pneumatic fenders with **>70%** market share



Offshore Wind Management System™

A web based integrated marine management system [MMS] that provides real-time operational data for the marine operations on a wind farm and enables customer to save money, reduce risk and protect their assets



Map

Assets

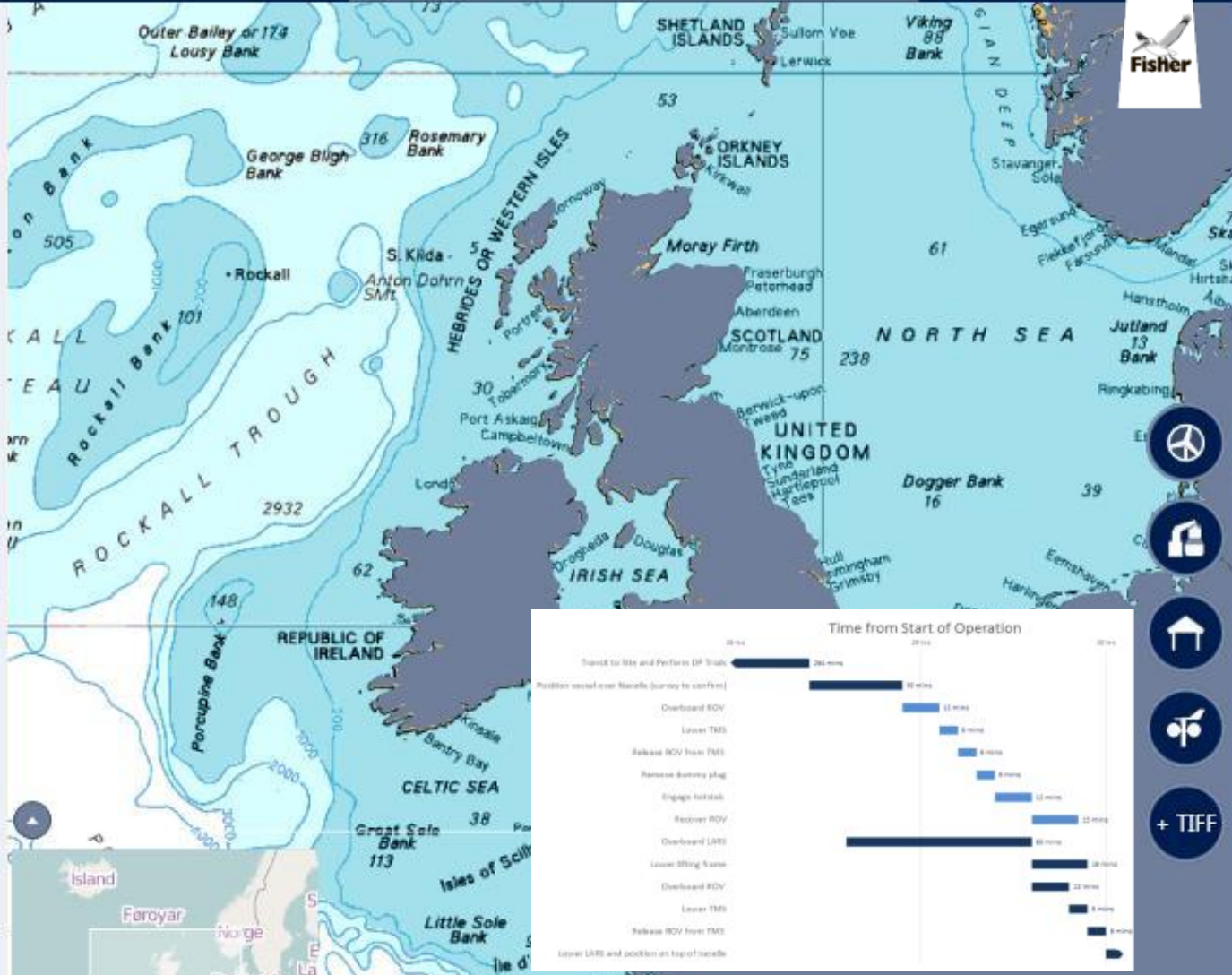
Tasks

Metocean

Library

Route

Lowestoft to site



Mermaid: marine economic risk management aid

An innovative, in-house software suite that identifies and helps mitigate against **weather down time and variable risk** during marine operations at FEED stage by simulating operational conditions that enables operators to improve project planning efficiency



Oil and gas



Ship operations

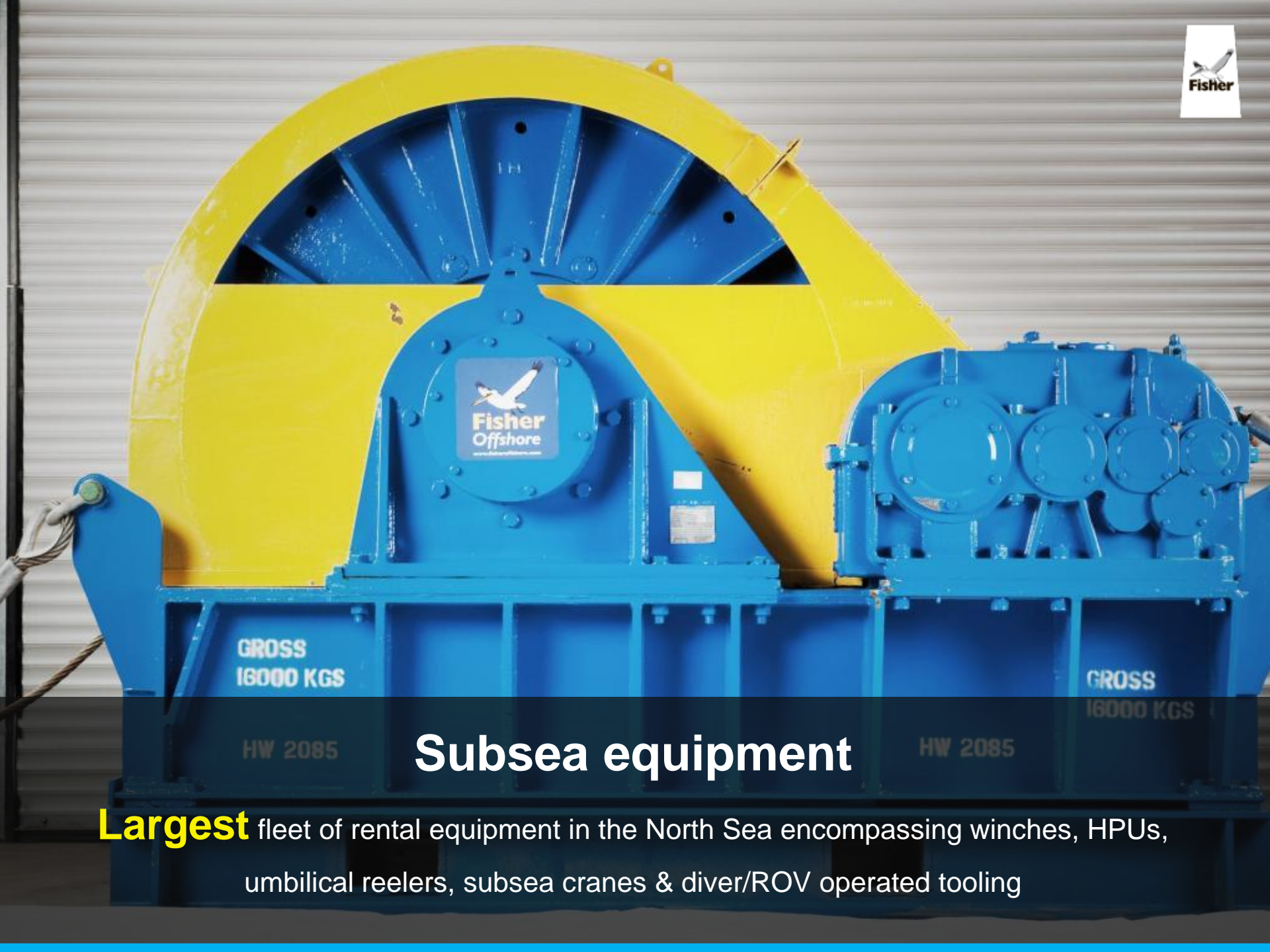
Specialist solutions

Marine services

- World leader in specialist subsea completion technology for artificial lift applications
- Market leader for air compressors, steam generators and rig cooling equipment for the well testing industry worldwide
- Norway's leading provider of ATEX products and support services to the oil & gas industry
- Largest fleet of subsea rental equipment in the North Sea

Tension leg platform monitoring

We have supplied **100%** of the tendon tension monitoring systems used on TLP
new builds in the last **5** years



Subsea equipment

Largest fleet of rental equipment in the North Sea encompassing winches, HPUs, umbilical reelers, subsea cranes & diver/ROV operated tooling



Mobilisation support

Planning, layout, mobilisation & sea fastening of deck mounted equipment including shore-side support & logistics



Well test support equipment

Market leader in rental of **Zone II & NORSOK** rated compressors, steam generators and heat suppression systems & equipment

Work-over riser safety system

Design, manufacture and support the **only proven** passive system that increases operator and rig safety in the event of a heave compensator failure to customers including Statoil, Chevron & Apache

Saturation diving systems

World leader in the design, manufacture and supply of integrated (DSV) and modular saturation diving system with **>100** systems commissioned



Subsea electrical & mechanical connectors

World leaders in mechanical and electrical completion technology for artificial lift applications with innovation agreements in place with major corporations including Chevron & Baker Hughes

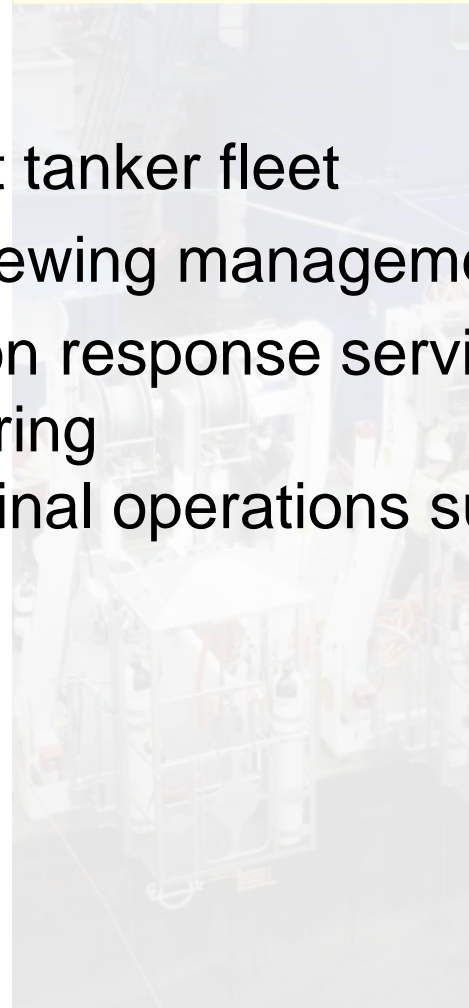
Ship operations



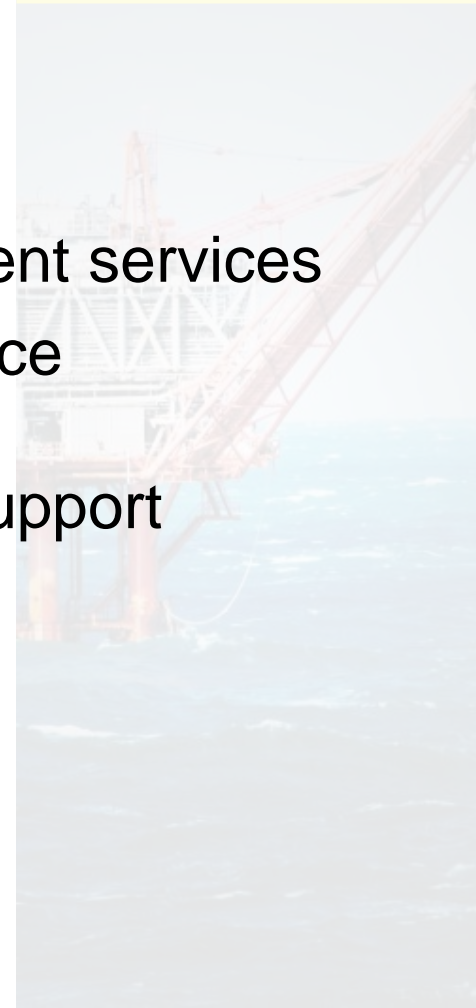
Specialist solutions

- Clean product tanker fleet
- Vessel and crewing management services
- EMSA pollution response service
- Vessel chartering
- Port and terminal operations support

Marine services



Oil and gas





Tankship operations

Transportation of **>3.8 million** tonnes of clean petroleum products annually in our fleet of 18 tankers with an exemplary environmental and safety record that places us as the **top performing** shipping company in Europe and in the world's top ten



Ship-to-Ship transfers

Completion of **>70%** (0.6 billion BOE annually) of the world's transfer of crude oil at sea with
Zero spills to water in more 12 years of operations

Mooring & towing systems

We develop and supply award winning, innovative mooring & towing systems that have enabled clients including Chevron Australia to significantly improve productivity and safety



Export terminal support services

\$300M turn-key marine operations contract for BP Angola that encompasses the marine terminals of Blocks 18 & 31 off the coast of West Africa



Vessel management & logistics

Successfully managed the lay-up, re-activation & handover to naval personnel of three
Corvette class vessels over the last five years

Pollution response

Contracted provider of **emergency response** cover to EMSA with four vessels in the fleet equipped to deal with pollution incidents in the Southern North Sea & Western Atlantic regions



3rd party vessel chartering

Sourcing of a variety of vessels to complete specific project tasks where our specification market and operational knowledge ensures technical suitability and commercial value for our clients



Specialist project support vessels

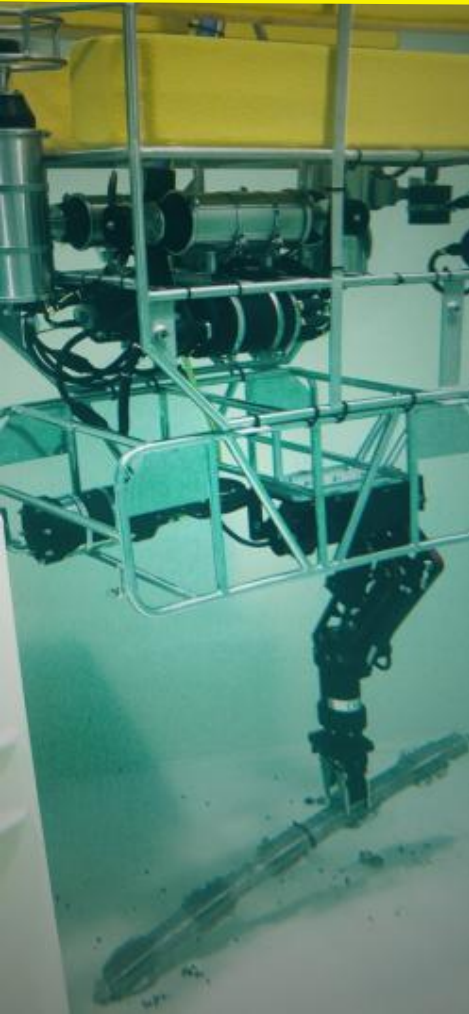
Leading the offshore wind market in providing multi-role support vessels with extended operational capability & dedicated ISO containerised work modules

An aerial photograph of a large industrial port facility. In the foreground, a large blue and green cargo ship is docked at a pier. Behind the ship, there are several large, light-colored industrial buildings with gabled roofs. To the left of these buildings is a large parking lot filled with many cars and several semi-trucks. Further back, there are more industrial structures, including a large cylindrical tank. The facility is situated on a peninsula or near a steep cliff, with a road winding along the top edge. The water is dark blue.

Shore-side support

Provision of shore-side personnel, facilities, welfare and infrastructure to support client operations

Specialist solutions



Marine services

- Asset integrity monitoring systems
- Major engineering and technical services supplier to the nuclear other high integrity industries
- Global industry leader in design, manufacture and operation of transfer under pressure systems
- Market leader in safety systems and machine productivity solutions for the construction industry and demolition plants

Oil and gas

Ship operations

Asset information & management systems

Integrated management solutions for the inspection and monitoring of the Queensferry Crossing to maximise productivity and safely extend asset life

Structural integrity management

One of the world's leading **structural monitoring specialists**. Responsible for pile and foundation testing and the provision of a structural monitoring system during construction of the **Burj Khalifa** tower, Dubai

Container weight monitoring

Supply of innovative, real-time system to accurately verify container weights and identify eccentric loading conditions during lifting/handling operations to reduce risks and increase profitability at port of Felixstowe

Manipulators and remote handling

Industry leaders in the design, manufacture and commissioning of multi-axis manipulators and remote handling equipment within the nuclear and process industries



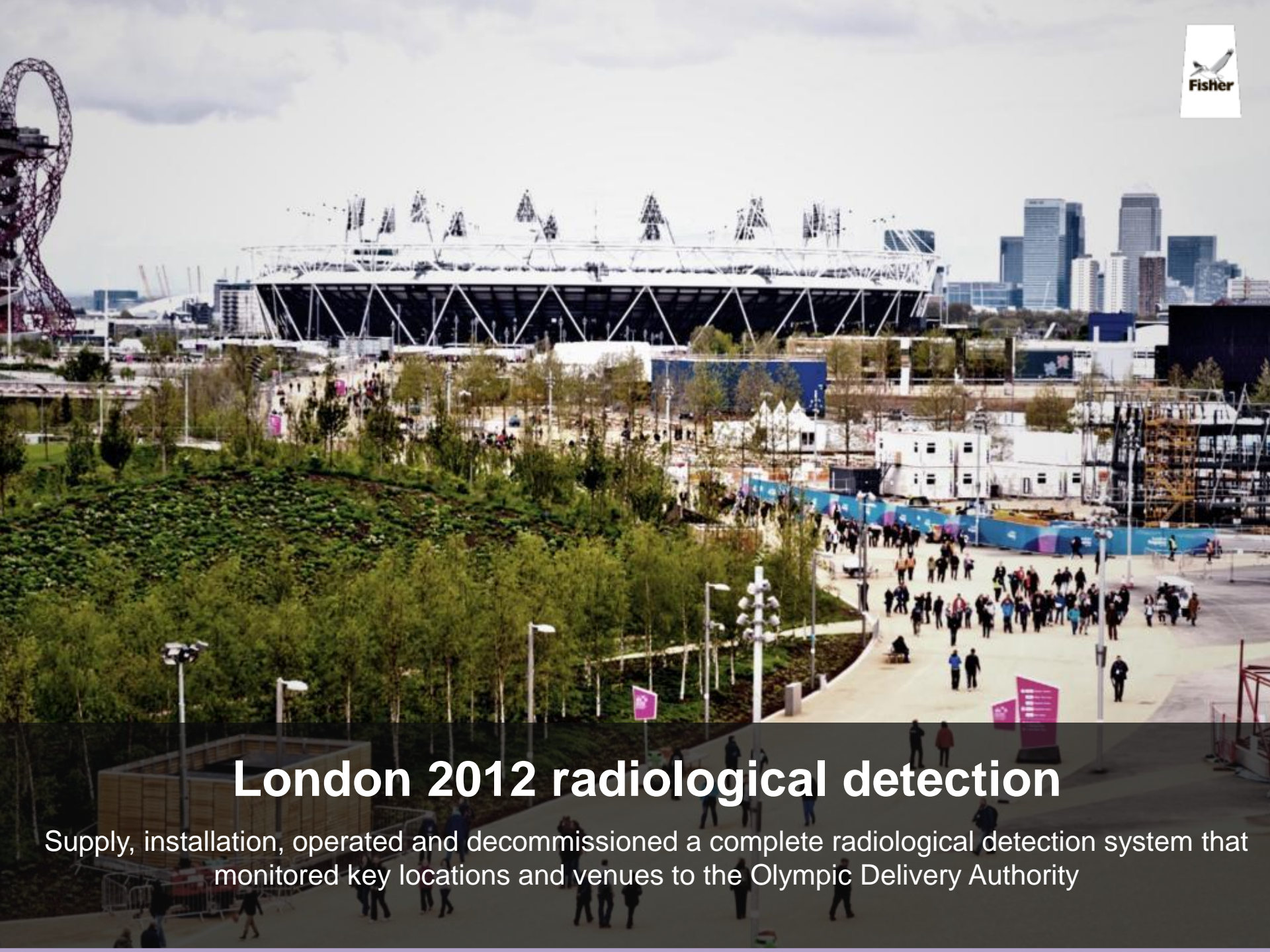
Sellafield decommissioning contract

£40M Contract award for bespoke Box Encapsulation Product Store (BEPS) being delivered as part of the Magnox Swarf Storage Silo (MSSS) programme tackling the clean-up of one of the most hazardous legacy facilities at Sellafield - Europe's most complex nuclear site



Dounreay decommissioning contract

Supply of specialist remote handling equipment to support the world's deepest nuclear clean-up project, assisting with the retrieval and processing of radioactive waste from the Dounreay shaft and wet silo



London 2012 radiological detection

Supply, installation, operated and decommissioned a complete radiological detection system that monitored key locations and venues to the Olympic Delivery Authority

Hazardous environment ROVs

Developer and supplier of submersible ROVs, task-specific tooling and operator services in nuclear applications



Aerospace design & engineering

Design, manufacture and install specialist tooling, test, assembly and transportation equipment used in the manufacture of A320, A330, A350, A380 & A400M to Airbus facilities in UK, Spain, France & Germany

Critical component NDT

One the largest providers of aircraft engine component NDT services specialising in the implementation of new technologies that reduce manufacturing inventory



Submarine rescue

World leaders in the provision submarine rescue services, including escape, rescue & support equipment to Republic of Singapore and Royal Australian Navies.
Rescue teams in permanent state of readiness 24/7 for emergency call-outs



Covert swimmer delivery systems

Design and manufacture of state-of-the-art swimmer delivery vehicles, surface to subsurface,
for covert operations and maritime protection

Machine safety & productivity systems

Experts in the design and manufacture of machine productivity and safety systems for construction equipment to enhance functionality, deliver higher productivity and reduce costs